

DUI UNDER 21?

DUI (age 18 to 21)

\$1750 fine and fees
Probation up to 2 years

DUI (under 18)

\$500 fine and fees
2 year license suspension

Other Consequences

your death or injury
death or injury of another
insurance cost increase
loss of employment
impounded vehicle
loss of scholarship
legal fees
loss of school activities
drug and alcohol rehab

Additional possible charges when driving under the influence

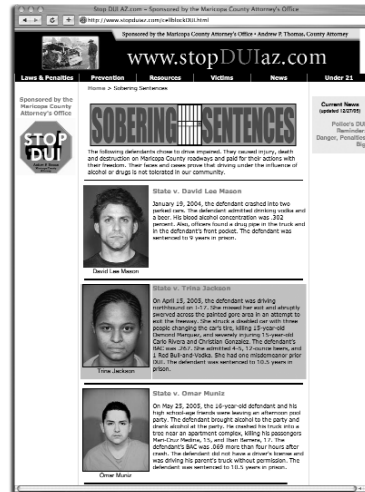
- 1st Degree Murder
- 2nd Degree Murder
- Manslaughter
- Negligent Homicide
- Aggravated Assault
- Leaving the Scene
- Endangerment
- Reckless Driving

Remember:

You can still be considered impaired even if your alcohol level is below .08%

Remember:

You can still be considered intoxicated if you have taken legal or illegal drugs or any toxic substance



Visit www.stopduiaz.com to see actual names and faces of convicted drunk drivers and their sobering sentences.

How to report a suspected DUI

In an emergency dial 911.

If not an emergency, call the local police, sheriff, or Arizona Department of Public Safety at 602-223-2000.

Note license plate number and color, make and model of the vehicle.

Note the cross streets of the vehicle and the direction of travel.

Keep a safe distance from the vehicle.

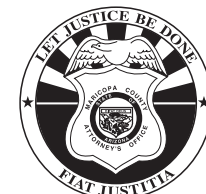


www.stopDUIaz.com

Funded in part by a grant from the Oversight Council on Driving or Operating Under the Influence and the DUI Abatement Fund.



REASONS TO
STOP
DRIVING
UNDER THE
INFLUENCE



ANDREW THOMAS
County Attorney



**A Message from
Andrew Thomas
Concerning Arizona DUI**

Driving Under the Influence is a growing problem in Maricopa County that requires a tough and effective response.

Drivers impaired by drugs or alcohol create carnage on our roadways, destroying the lives of thousands each year. Drinking drivers are involved in 27% of all traffic fatalities. Victims who have been killed or maimed by drunk drivers deserve justice, and police and prosecutors are working hard to see that those guilty of DUI are prosecuted and punished to the fullest extent of the law.

Arizona has very tough DUI laws and there are serious consequences for those who break them. In Maricopa County, if you drink and drive, you will go to jail or prison.

Driving after drinking even a small amount of alcohol can put you at risk of getting a DUI. Please use these tips to help keep our community safe:

- Don't ride with someone who's been drinking
- Stop an intoxicated person from driving
- Offer to be a non-drinking driver for friends
- Report suspected drunk drivers to the police
- Call a non-drinking friend for a ride home

Sincerely,

Andrew P. Thomas
Maricopa County Attorney

Eight Reasons To Stop DUI

The legal limit for blood alcohol is only .08%

A person is killed in Arizona traffic every 8 hours

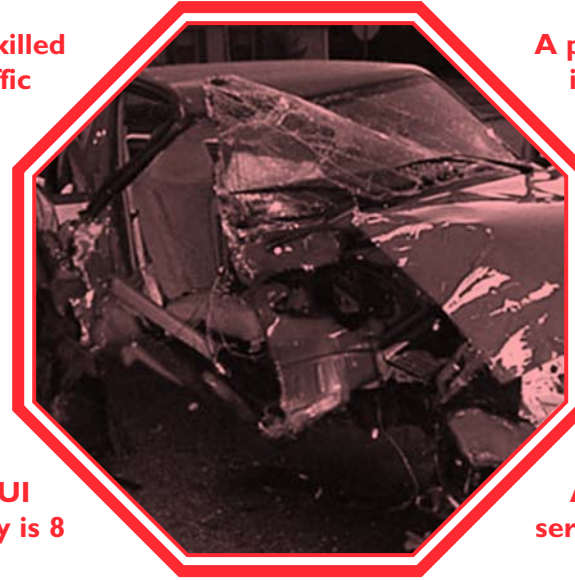
A person is injured in Arizona traffic every 8 minutes

Of every 10 drinking drivers, 8 are men

The time it takes for a breath test is 8 seconds

The number of jurors on a typical DUI jury is 8

8% of inmates in Arizona prisons are serving sentences for DUI

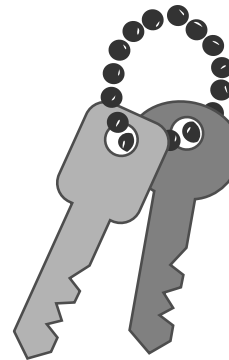


DUI suspects can be charged with up to 8 other crimes, including homicide

Penalties

DUI
Misdemeanor
\$1250 fine and fees
Minimum of 10 days jail
Certified ignition interlock device on motor vehicles

Extreme DUI
Misdemeanor
Over .15% alcohol
\$2500 fine and fees
Minimum of 30 days jail
Certified ignition interlock device on motor vehicles



Aggravated DUI (minor in car)
Felony
\$4000 fine and fees
Minimum of 4 months prison
Up to 10 years probation
Certified ignition interlock device on motor vehicles
3 year license revocation

Aggravated DUI (repeat offender/suspended driver)
Felony
\$4600 fine and fees
Minimum of 4 months prison
Up to 10 years probation
Certified ignition interlock device on motor vehicles
3 year license revocation